

# EOS 400D Digital SLR Camera

**Canon**

advanced simplicity®



Stunning quality, inspired design.

Creative photography has never been easier.

**EOS 400D**  
DIGITAL

**10.1**  
MEGA  
PIXELS

**9**-POINT  
AF

Picture Style

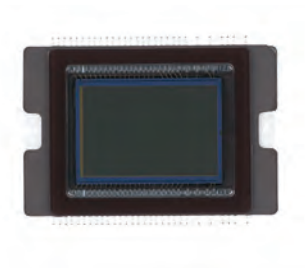
Self Cleaning  
SENSOR UNIT

**DiG!C**  
II

# Breathtaking quality

## Dazzling resolution and rich colour

Experience exceptional clarity, razor-sharp images and the rich colours that the Canon 10.1 Megapixel CMOS sensor can produce. Combined with the imaging performance and super-fast speed of the DiG!C II image processor, the EOS 400D is the perfect camera for creative photography fun.



## Capture more detail with DiG!C II

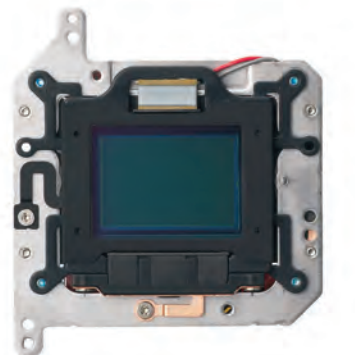


The purpose-built DiG!C II image processor is a single chip that acts as the brain in every one of our digital cameras. With DiG!C II, you'll capture unsurpassed detail and brilliant colour in every photo, exactly the way you remember it.

The imaging sensors of Canon digital SLR cameras are larger, capturing more data and detail in every shot. The DiG!C II processor, with its powerful processing ability, translates huge amounts of data at blistering speed, assembling images of exceptional clarity with natural colours reflected in every detail.

## Dust free images every time

Up until now, dust has presented a challenge to capturing the perfect image. If tiny particles of dust manage to enter and adhere to the EOS 400D's CMOS sensor, the Self Cleaning Sensor Unit automatically removes them as soon as the camera is switched on. The EOS 400D insurance against dust nasties also extends to specialised software, ensuring even most troublesome dust spots are removed from your precious images.



Without Self Cleaning Sensor Unit



With Self Cleaning Sensor Unit

# Intelligent design

## Compact design for ease of use

Packed full of features and totally mobile, the EOS 400D is designed for aspiring photographers. The Mode Dial on the top is simple to use and has been designed to make one-hand shooting comfortable. Compact, light-weight and available in two colours, black and silver, you can take the EOS 400D anywhere. The optional Battery Grip BG-E3 adds buttons for vertical shooting, and takes either NB-2LH batteries or AA's.



## Get every photo in focus

Even when shooting an off-centre subject you'll still get the perfect focus for your shot. Using a sophisticated 9-point Autofocus system, the camera automatically detects your subject and focuses accurately. Of course you can also choose the point of focus manually to get the exact effect you desire.



## Capture the moment – quickly and easily

There are some shots that just won't wait. And to help you catch every shot the EOS 400D has been designed with a super-fast 0.2 sec start up time, plus the ability to take photos at a speedy 3 frames per second at up to 27 shots. And with a top shutter speed of 1/4000 sec, and flash sync at 1/200 sec, you won't miss a shot.





## Complete simplicity

### Creativity made easy

Capable of advanced photography, the EOS 400D is also perfect for beginners. With a large 2.5 inch LCD and Mode Dial for the selection of modes such as Sports, Portrait and Landscape, the camera optimises the settings for particular situations and conditions. Use the built-in expertise to develop the photographer in you.



Landscape



Portrait



Sports

### Simple flash functions

The highly intelligent built-in flash with E-TTL II Flash Metering System does the work for you. It incorporates subject distance, reflection and motion into its calculations, providing accuracy and stability in flash exposure.



## The result is clear

You'll love the detail you get from the EOS 400D's impressive 2.5 inch LCD screen. With the Single Image Display you can zoom in and magnify the image taken up to 10x – then simply scroll up, down, left or right for a close-up on a particular area. View your photos easily with auto playback, automatic image rotation and the ability to jump forward or back making reviewing your shots easier than ever. The LCD also reveals shooting information so you'll know exactly what you're doing.



## Printing made easy

You don't need a computer to print your photos, thanks to Canon's Direct Print technology. Simply connect the EOS 400D camera to a Canon PIXMA Photo printer, Canon Selphy Photo printer or PictBridge compatible printer to allow access to a wide range of printing media, modes and styles. With the EOS 400D A3+ prints are not only possible, they are breathtaking.



# Control and freedom

## Test your creativity

Take creative control of your photography without getting out of your depth. Choose the effect you want with the 5 Creative Zone modes such as Program AE, Shutter Priority AE and Aperture Priority AE. Develop your skills by manipulating shutter and aperture combinations, or enjoy the freedom of going totally Manual.

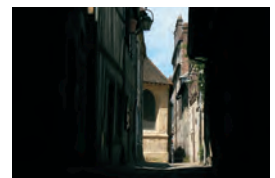


## Kind exposure

The EOS 400D's 35-zone Evaluative Metering Sensor and 3 metering modes make the art of controlling exposure as easy or advanced as you want. The 35-zone Evaluative Metering ensures accurate, consistent exposure, taking into account lighting extremes and subject. Control is there when you want it with Partial Metering, to bring extra sensitivity to high contrast situations or Centre-weighted Average Metering, a favourite of the traditionalists.



Evaluative



Partial



Centre-weighted

## Precision focus

Highly responsive Autofocus makes for shooting excitement. The camera automatically uses one of the 3 AF systems to deliver fast, spot-on focus in any situation. One Shot AF is the best choice for still subjects, locking in focus as you push the shutter button halfway. AI Servo AF tracks active subjects, predicting their movement. And AI Focus AF switches between One-Shot AF and AI Servo AF when subjects start and stop – making it perfect for shooting children, pets and other unpredictable subjects.

## More options for your photography

A revolution in image control, six "Picture Style" settings simulate the characteristics of different films, and allow the 'look' of images to be determined. The Picture Style modes include Standard, for punchy, print-from-the-camera colour; Portrait for softer, more natural skin tones; Landscape, for vivid blues and greens and overall sharpness; plus Neutral, Faithful and Monochrome, which can be customised to emulate colour filters used with black and white film.



Standard mode



Portrait mode



Landscape mode



Neutral mode



Faithful mode



Monochrome mode

# Sharing has never been easier

## Fast and simple downloads

Don't waste time waiting for your images to download. With the EOS 400D's USB 2.0 Hi-Speed Interface you'll be viewing your photos on your computer in no time. With a super-fast transfer speed, it's easy to get your pictures displayed on your screen quickly. Perfect for viewing images on a television screen the EOS 400D also has a video OUT terminal.

## Sharing has never been more fun

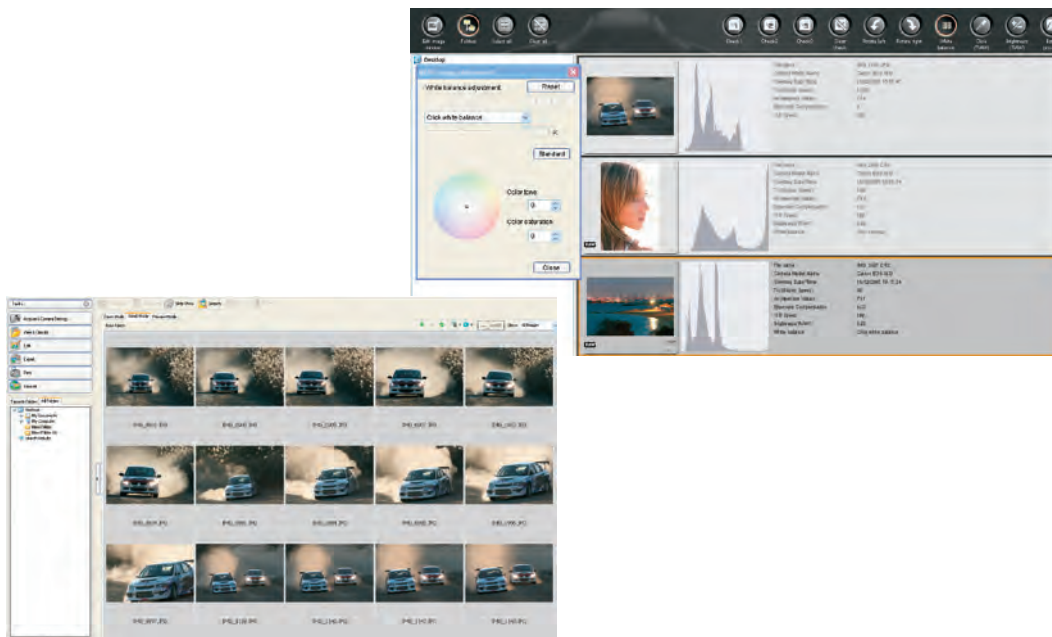
Once transferred to a computer, Canon's EOS Digital Solution Disk (Ver. 13.0 as of September 2006), and Digital Photo Professional (Ver. 2.2), add a combination of powerful, easy to use tools designed to seamlessly transform images captured by the camera into spectacular photographs, perfect for sharing.

## EOS Solution Disk (Version 13)

The EOS Solution Disk includes ZoomBrowser EX 5.7 and ImageBrowser 5.7, which provide simple storage, editing and sharing options for images. Also included is EOS Utility 1.1 for simple remote shooting and image downloading, and PhotoStitch which allows images to be joined to create impressive panoramas.

## Digital Photo Professional (Version 2.2)

Digital Photo Professional is an advanced RAW image processing application, that gets the most out of the professional quality RAW image file format also available on the EOS 400D. In addition to sophisticated tools for controlling exposure and colour, it also allows cropping, direct transfer to other applications and with the EOS 400D it's Dust Delete Data function removes any unpleasant dust spots left in images.





# EF series lenses

## Canon EF Lenses for every moment

Canon's world-renowned line-up of EF Lenses includes over 50 models ranging from 14mm ultra-wide-angle to 600mm super-telephoto. Through Canon's advanced optical know-how and sub-micron precision engineering, EF Lenses offer unprecedented capabilities that meet wide-ranging needs. Leading features include a high precision Ultrasonic Motor that silently drives the AF mechanism, an Image Stabilizer that automatically compensates for camera shake, aspherical optics, Fluorite lenses, Ultra Low Dispersion (UD) lenses, and Super UD lenses.



## The professional's choice: L-Series

No other line of lenses carries the reputation of Canon's renowned L-series. Easily recognised by the bold red ring around the outer barrel, these lenses utilise the best in Canon's cutting-edge technology, and feature superior durability and resistance to the elements, enhancing performance without compromising ease of use.

One of the greatest challenges in the design of a telephoto lens has been the minimisation of colour fringing, or chromatic aberration. So, some L-series lenses use Canon's Ultra Low Dispersion glass to help minimise this effect. The design of the UD glass provides outstanding contrast and sharpness and minimises the splitting of colours as they pass through the elements. In certain super-telephoto lenses, Fluorite elements are used, as they are even more effective in minimising these characteristics, enabling more compact lens design with no compromise in performance. Wide angle and fast standard lenses often suffer from another optical problem: Spherical Aberration. This occurs when the point of focus of the light ray coming through the centre of the lens does not align with the point of focus of the light ray coming through the lens edge. Since there is no sharp point of focus, the image looks blurred. Canon's aspherical elements change the curvature from centre to edge to align the points of focus of the incoming light rays so that the entire image plane appears focused.





## Image Stabilizer

Canon's Image Stabilizer (IS) technology makes handheld photography possible in more low-light situations than ever before. When camera shake occurs using normal lenses without IS technology, the image projected on the focal-plane also shakes, often resulting in blurred images at slower shutter speeds. In the same situation, with an IS lens attached to the camera, a special group of lens elements automatically shift position, compensating for the movement and stabilising the image. This compensatory effect adds the equivalent of up to three stops of exposure, expanding photographers' handheld options dramatically.



## Diffractive Optics: DO

Lenses using Canon's Diffractive Optics are both high performance and more compact than those with traditional refractive designs. While conventional glass elements disperse incoming light, thereby causing chromatic aberration, Canon's unique multi-layer diffractive elements work together with conventional glass optics to reduce the effects of dispersion and minimise or eliminate chromatic aberration. Diffractive coatings are bonded to the rear surface of one lens element and the front surface of another. These elements are attached together to form a single multi-layer diffractive (DO) element. This elements' dispersion characteristics are reversed when compared to conventional optics, making it possible to cancel chromatic aberrations at each wavelength when conventional and DO elements are combined.

## Specialty Lenses

### Macro Lenses

To bring small things into full-sized view, Canon's EF lens line-up has a number of options for true close-up and macro photography. With macro lenses for precision, and three screw-on close-up lenses for convenience - in addition to EF Life-Size Converter and two Extension Tubes, Canon has a perfect close-up option for any situation.



### TS-E Lenses

TS-E lenses are capable of tilt and shift movements, bringing many of the advantages of technical view cameras to the EOS system. Tilt movements alter the angle of the plane of focus between the lens and CMOS sensor (or film plane), making broad depth-of-field possible even at large apertures; shift movements move the lens' optical axis in parallel, allowing the photographer to control perspective.



### Super Telephoto

Canon's Super Telephoto lenses are renowned for their optics, performance and speed. They can be found on the sidelines of every major sports event around the world. From the EF 300mm f/2.8L IS USM all the way to the EF 600mm f/4L IS USM, every professional's arsenal will be fortified with an L-series Super Telephoto.



## E-TTL II: Smarter flash performance

Canon's high-end digital SLRs employ E-TTL II, the most advanced flash metering technology, to solve problems encountered by photographers. Occasionally, if you lock focus and recompose your shot, this could result in a non-optimal exposure with previous systems. E-TTL II remedies this by ignoring the active focusing point, considering distance information and evaluating pre-flash information immediately before the exposure occurs. Sometimes in flash photography, mirror-like objects in the image cause the sensor to register localised, abnormally high levels, and would result in underexposure. E-TTL II knows to ignore those levels, resulting in the correct exposure. This feature is useful when shooting a subject with a highly reflective object in the background, or if the subject itself is highly reflective. Metered areas with large discrepancies between ambient and pre-flash readings are excluded or down-weighted because they are assumed to contain a highly reflective subject. These readings are weighted, averaged and compared with the ambient light reading and the main flash output is then set and stored in memory, ensuring consistent flash output through a number of shots.



### Speedlite 580EX

- Approx. 25% faster recycling time compared to previous 550EX.
- Superior evenness of exposure, centre to corner of frame.
- Slightly higher max. guide number at 105mm setting (GN 58 meters at ISO 100).
- Auto conversion of flash coverage with compatible digital SLRs.
- White Balance info communicated instantly to compatible digital SLRs.
- Full swivel, 180° in either direction (first TTL flash with this ability).
- AF-assist beam now compatible with all AF points on every EOS SLR.
- Select 'Dial' for easy inputs and user control.



### Speedlite 430EX

- Significantly greater user control via new LCD panel on rear of flash.
- Wide-angle pull-down panel covers 14mm lens (on a full-frame camera).
- Slightly higher max. guide number at 105mm setting (GN 43 meters at ISO 100).
- Auto conversion of flash zoom coverage with compatible digital SLRs.
- White Balance info communicated instantly to compatible digital SLRs.
- Bounce upward to 90°; swivel right (to 90°) and left (180°).

## Macro Ring Lite MR-14EX

- Twin-tube ring lite designed for close-up photography with EF and EF-S Macro lenses; Flash tubes can fire together or independently.
- Supports E-TTL and E-TTL II Wireless Autoflash in conjunction with one or more compatible EX Speedlites.
- Incandescent focusing lamps and two forms of modelling flash permit preview of lighting effects.
- Illuminated LCD panel for easy flash settings in any lighting condition.



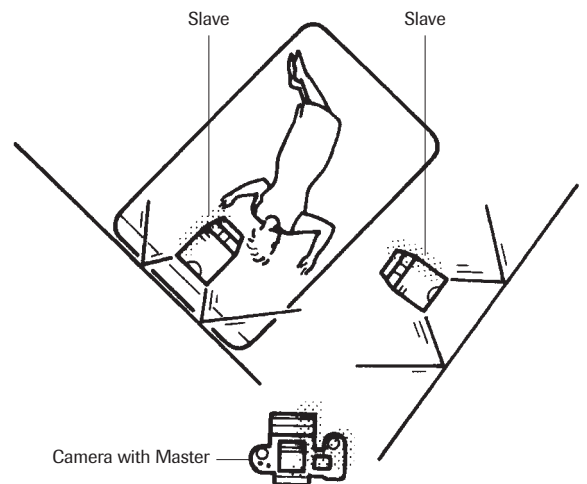
## Macro Twin Lite MT-24EX

- Attaches to all Canon EF and EF-S Macro lenses (EF 180mm f/3.5L requires Macro Lite Adapter 72C).
- Twin flash heads can be rotated over 80° angle around lens in 5° increments.
- Heads can be swivelled or bounced and can be removed from mounting ring for added control.
- Powerful Guide Number of 24 (meters at ISO 100), full E-TTL/E-TTL II control and advanced features including FEL, Hi-speed sync, and FEB.
- Full E-TTL/E-TTL II automatic flash control with compatible EOS bodies, including EOS-1Ds Mark II, 1D Mark II N, 5D, 20D, and 400D digital SLRs.
- Incandescent focusing lamps and two different types of 1-second modelling flash allow easy focusing and previewing of lighting effects.

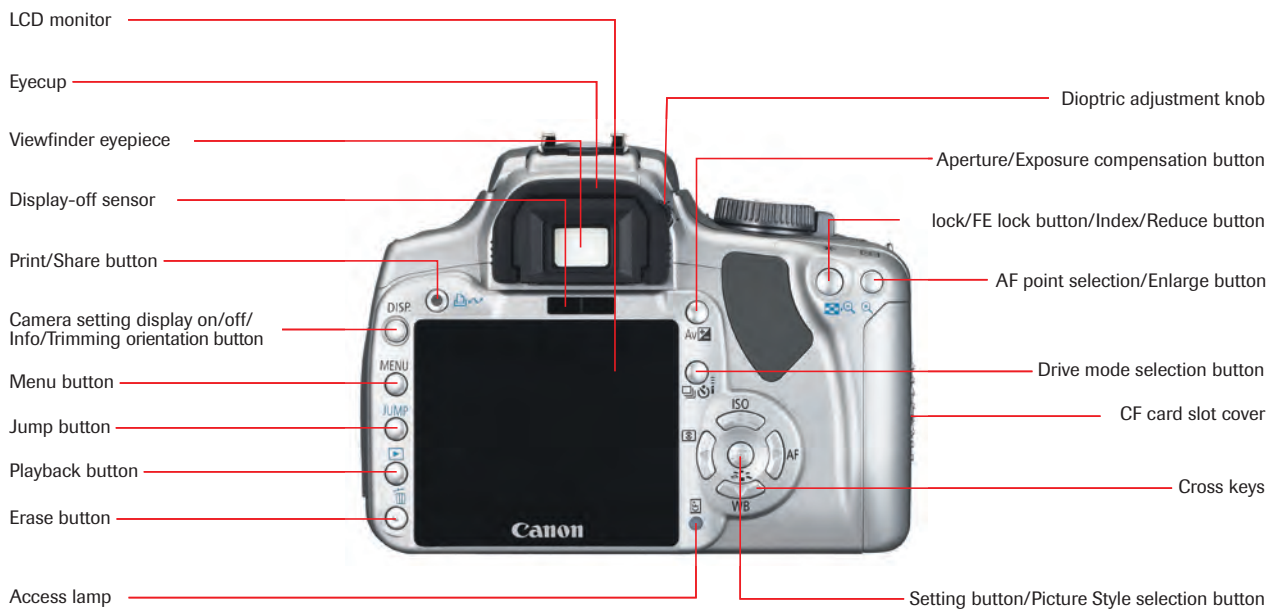


## Speedlite Transmitter ST-E2

- Dedicated transmitter to control unlimited number of compatible slave flashes.
- Compatible with Speedlite 580EX, 550EX, 430EX and 420EX.
- Controls compatible slave units up to 10 meters outdoors and 15 meters indoors.

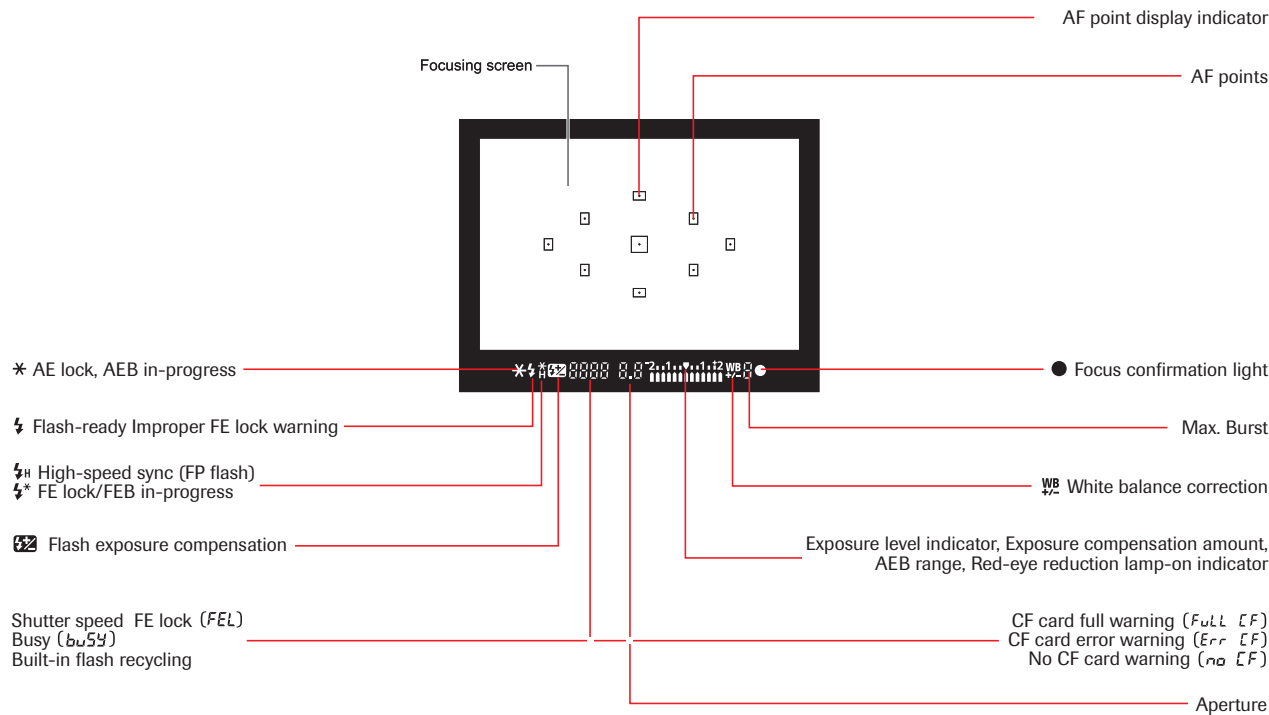


# NOMENCLATURE FOR EOS 400D

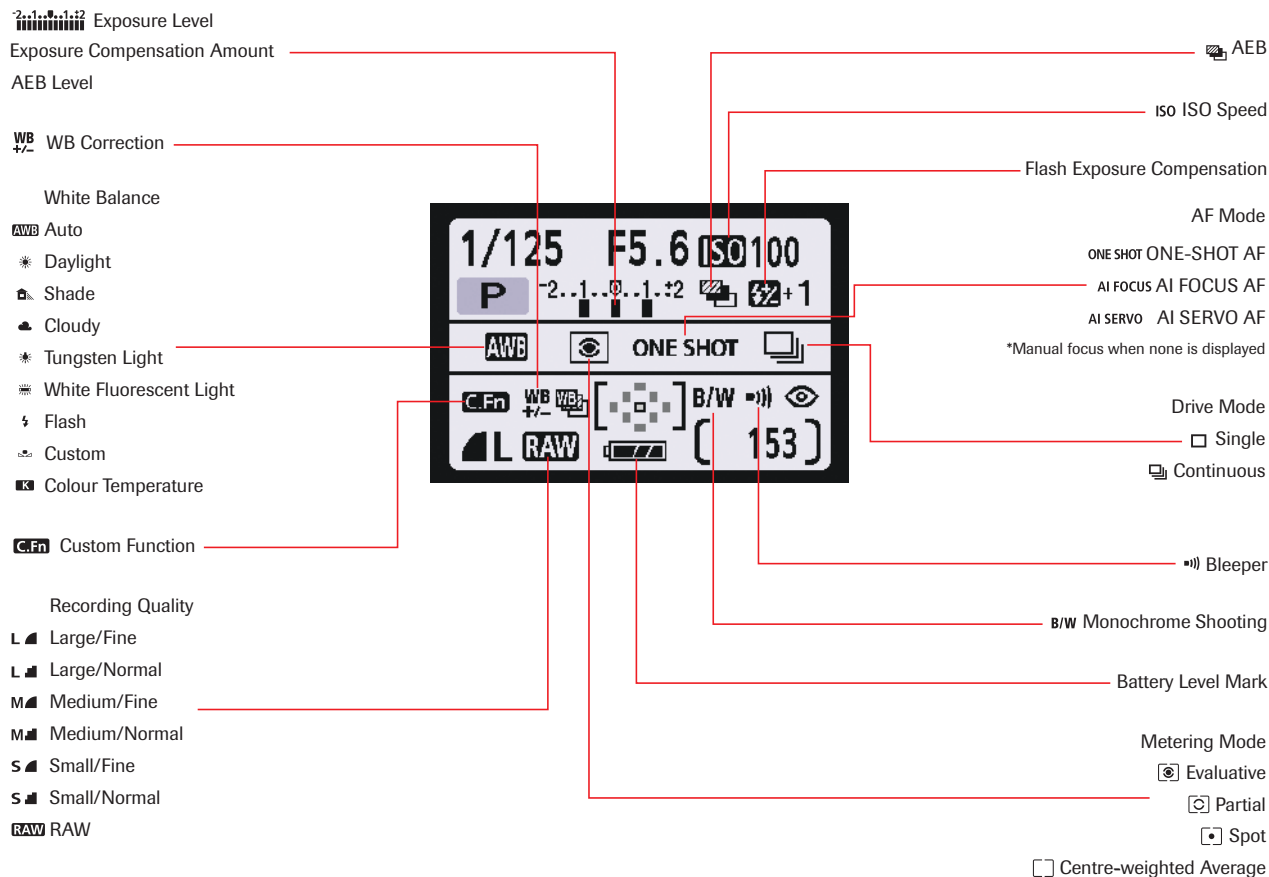




VIEWFINDER INFORMATION



TOP LCD PANEL INFORMATION



## SPECIFICATIONS

<b>Image Sensor</b>	10.1 MP CMOS APS-C 22.2 x 14.8mm.
<b>Special Features</b>	<ul style="list-style-type: none"> <li>• Maximum continuous shooting speed of 3 fps (approximate).</li> <li>• Built-in 2.5 inch wide viewing angle colour monitor.</li> <li>• Custom Functions (11 custom functions with 29 settings).</li> <li>• Simultaneous RAW and JPEG image capture.</li> <li>• Depth-of-Field Preview.</li> <li>• Self Cleaning Sensor Unit.</li> </ul>
<b>Autofocus System</b>	TTL-CT-SIR CMOS Sensor. One-Shot and AI Servo AF with Focus Prediction. Manual focusing confirmation possible with EF and EF-S Lenses. Automatic or manual focus point selection.
<b>No. of Focusing Points</b>	Nine. Centre AF point is cross type Hybrid high and standard precision.
<b>Autofocus Sensitivity</b>	EV-0.5-18 (at ISO 100).
<b>Shutter</b>	Vertical-travel, focal plane shutter with soft touch electromagnetic release, all speeds electronically controlled.
<b>Shutter Speeds</b>	30-1/4,000 sec.
<b>Maximum Flash Synchronisation Speed</b>	1/200 sec.
<b>Storage Media</b>	Digital images are stored on removable CompactFlash™ Type 1 & II.
<b>Frames Per Second</b>	Single, 3 fps.
<b>Metering System</b>	<ul style="list-style-type: none"> <li>• TTL full aperture metering.</li> <li>• 35-zone Evaluative metering.</li> <li>• Centre-weighted average metering.</li> <li>• 9% Partial metering.</li> <li>• Pre-flash metering (E-TTL II).</li> </ul>
<b>Metering Sensitivity</b>	EV 1-20 for all patterns (at ISO 100 with f/1.4).
<b>Exposure Compensation</b>	+/-2 stops in 1/3 or 1/2-stop increments.
<b>Flash Exposure Compensation</b>	+/-2 stops in 1/3 or 1/2-stop increments.
<b>AE Lock</b>	Yes.
<b>Exposure Modes</b>	<ul style="list-style-type: none"> <li>• Program AE.</li> <li>• Aperture-priority AE.</li> <li>• Full Auto.</li> <li>• Depth-of-field AE.</li> <li>• Shutter Speed Priority AE.</li> <li>• Programmed Image Control Modes (6).</li> <li>• Manual.</li> <li>• E-TTL II Flash AE.</li> </ul>
<b>White Balance</b>	Settings: Auto, Daylight, Shade, Cloudy/Twilight/Sunset, Tungsten Light, White Fluorescent Light, Flash, Custom (total 8 settings).
<b>Auto White Balance</b>	Image Sensor.
<b>Colour Temperature Compensation</b>	<ul style="list-style-type: none"> <li>• White Balance bracketing: +/-3 stops in full-stop increments.</li> <li>• White Balance correction: +/-9 stops in full-stop increments.</li> <li>• Blue/Amber or Magenta/Green bias possible</li> </ul>
<b>Viewfinder</b>	Fixed eye-level pentamirror.
<b>Viewfinder Coverage</b>	95% horizontal and vertical at 0.8x.
<b>Viewfinder Information</b>	<p>Inside the picture area: Nine focusing points.</p> <p>Displayed at the bottom of the viewing area:</p> <ul style="list-style-type: none"> <li>• Shutter speed.</li> <li>• Aperture value.</li> <li>• AE lock.</li> <li>• FE lock.</li> <li>• Exposure level scale.</li> <li>• Flash status.</li> <li>• Flash exposure compensation.</li> <li>• AF-in-focus indicator.</li> <li>• FP mode indicator (high-speed sync).</li> <li>• Remaining frames in burst.</li> <li>• Red-Eye reduction.</li> <li>• CF card full warning.</li> <li>• White Balance +/-.</li> <li>• Focus Confirmation.</li> </ul>
<b>Focusing Screen</b>	Fixed Precision Matte.
<b>Self-Timer</b>	Electronically controlled with 10- second delay.
<b>LCD Monitor</b>	TFT colour liquid-crystal type; 2.5 inch with approx. 230,000 pixels. 100% coverage with respect to the effective pixels. Brightness adjustment available with 7 levels.
<b>Image Playback</b>	Single Image, 9-image index, Magnified zoom, Auto Play, Auto review after shooting.
<b>Direct Printing</b>	Compatible printers: SELPHY Compact Photo Printers, CP Direct, PictBridge compatible Printers.
<b>Body Dimensions (W x H x D)</b>	4.98 x 3.71 x 2.56 in. / 126.5 x 94.2 x 65.0 mm.
<b>Weight (Body Only)</b>	Approx 510g.

CUSTOM FUNCTION CHART

Custom Function No.	Function Description	Setting	EOS 400D
C. Fn-01	SET button/ Cross keys function	0	SET: Picture Style
		1	SET: Quality
		2	SET: Flash exposure compensation
		3	SET: Playback
		4	Cross keys: AF frame selection
C. Fn-02	Long exposure noise reduction	0	Off
		1	Auto
		2	On
C. Fn-03	Flash sync. speed in Av mode	0	Auto
		1	1/200 sec. (Fixed)
C. Fn-04	Shutter/ AE lock button	0	AF/AE lock
		1	AE lock/AF
		2	AF/AF lock, no AE lock
		3	AE/AF, no AE lock
C. Fn-05	AF-assist beam	0	Emits
		1	Does not emit
		2	Only external flash emits
C. Fn-06	Exposure level increments	0	1/3-stop
		1	1/2-stop
C. Fn-07	Mirror lockup	0	Disable
		1	Enable
C. Fn-08	E-TTL II	0	Evaluative
		1	Average
C. Fn-09	Shutter curtain sync.	0	1st curtain sync.
		1	2nd curtain sync.
C. Fn-10	Magnified view	0	Image playback only
		1	Image review and playback
C. Fn-11	LCD display when power on	0	Display
		1	Retain power OFF status

**Canon Australia Pty. Ltd.**  
Freecall: 1800 021 167  
Facsimile No: + 61 2 9805 2632

**Canon New Zealand Limited**  
Freecall: 0800 222 666  
Facsimile No: + 64 9 489 0380

canon.com.au  
canon.co.nz  
canon.com.au/digitalimage

Please note images are for illustrative purposes only.

Canon is a registered trademark of Canon Inc. and 'advanced simplicity' is a registered trademark of Canon Australia Pty Limited. PIXMA and the PIXMA logo are trademarks of Canon Inc. Microsoft, Windows and the Windows logo are registered trademarks of Microsoft Corporation in the United States and in other countries. All other trademarks are the property of their respective owners.