

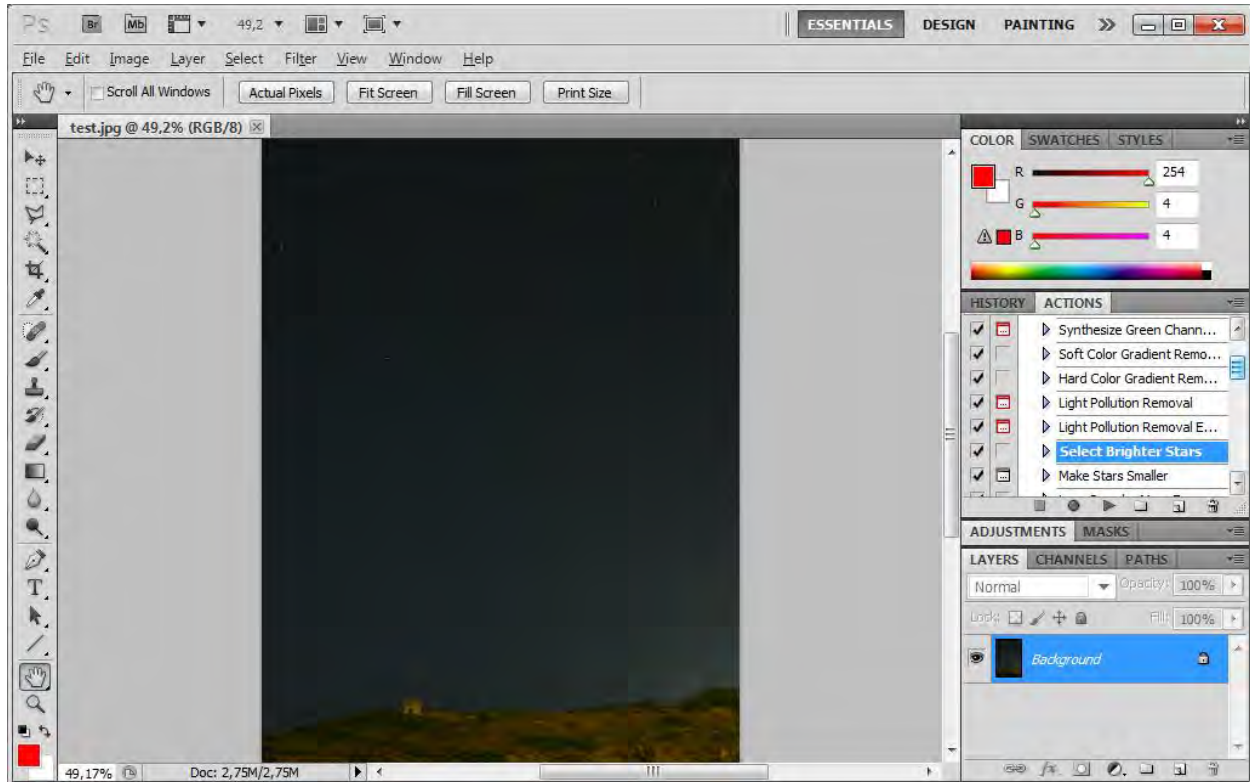
Akira Fujii Effect in constellation imaging

Anyone who has read Sky & Telescope magazine in the last 5 years cannot help but have been impressed with the quality of the constellation photographs used. These have almost exclusively been the work of the Japanese astro-photographer Akira Fujii. The feature of his photographs is the emphasized bright stars, with colored halos, in combination with faint stars that are still sharp. His work is so good it is now marketed by David Malin at the Anglo Australian Telescope. The actual process he uses (probably a diffusion filter) has not been revealed but with digital processing we can now easily emulate these effects.

Source: <http://www.deep-sky.co.uk/imaging/constell/constell.htm>

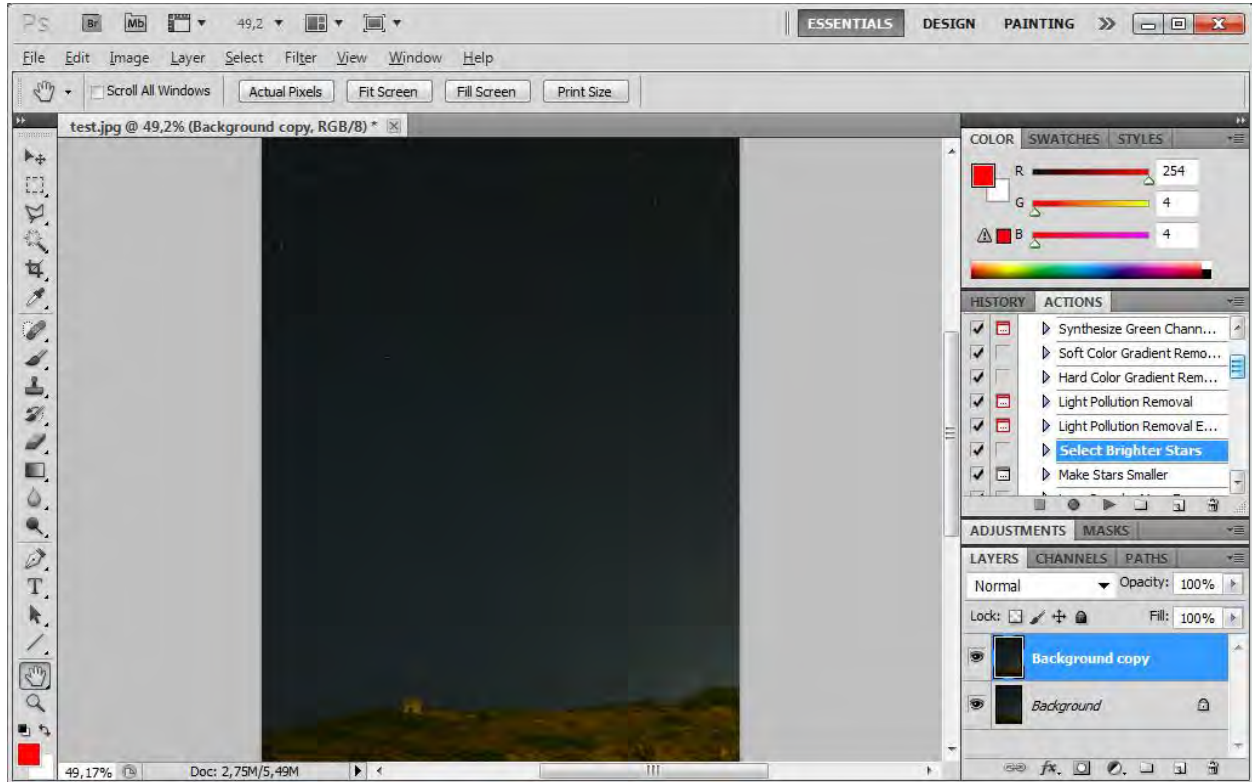
In this tutorial I present another way to make the Akira Fujii Effect using Photoshop techniques.

Step1: Open the image in Photoshop



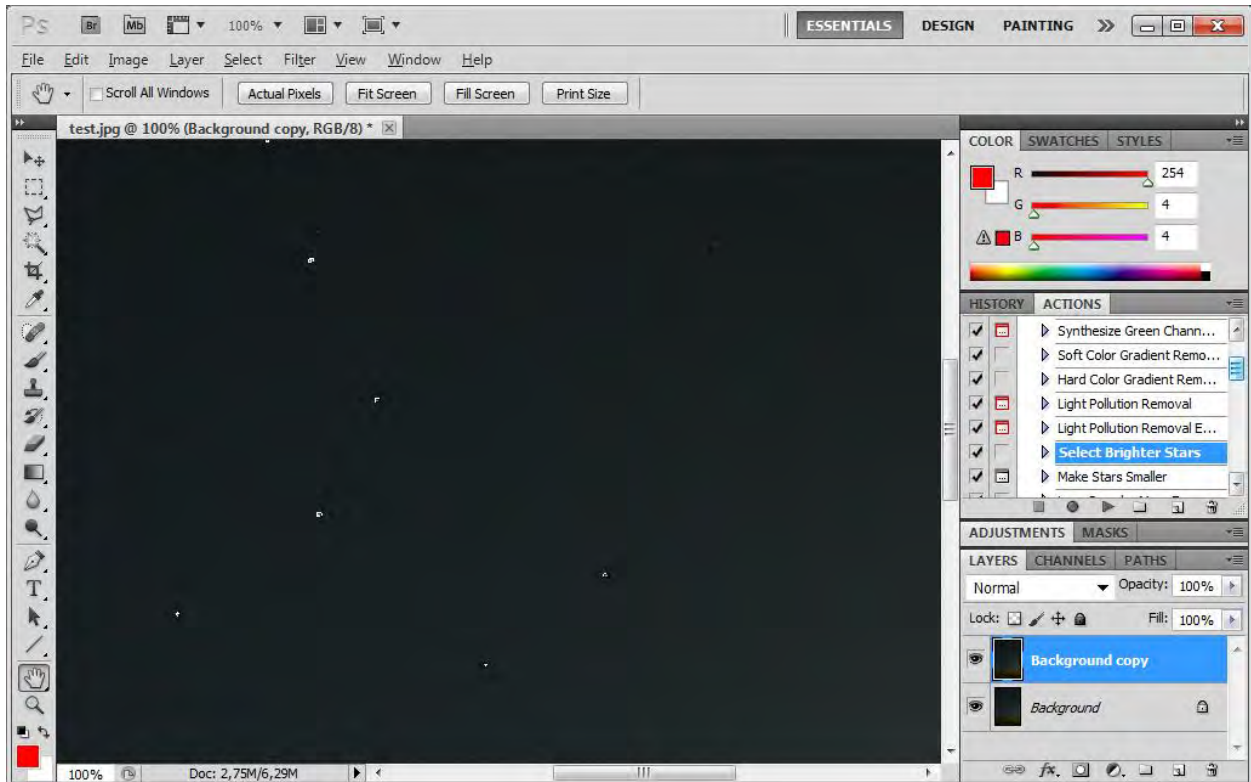
Akira Fujii Effect in constellation imaging

Step2: Duplicate the layer

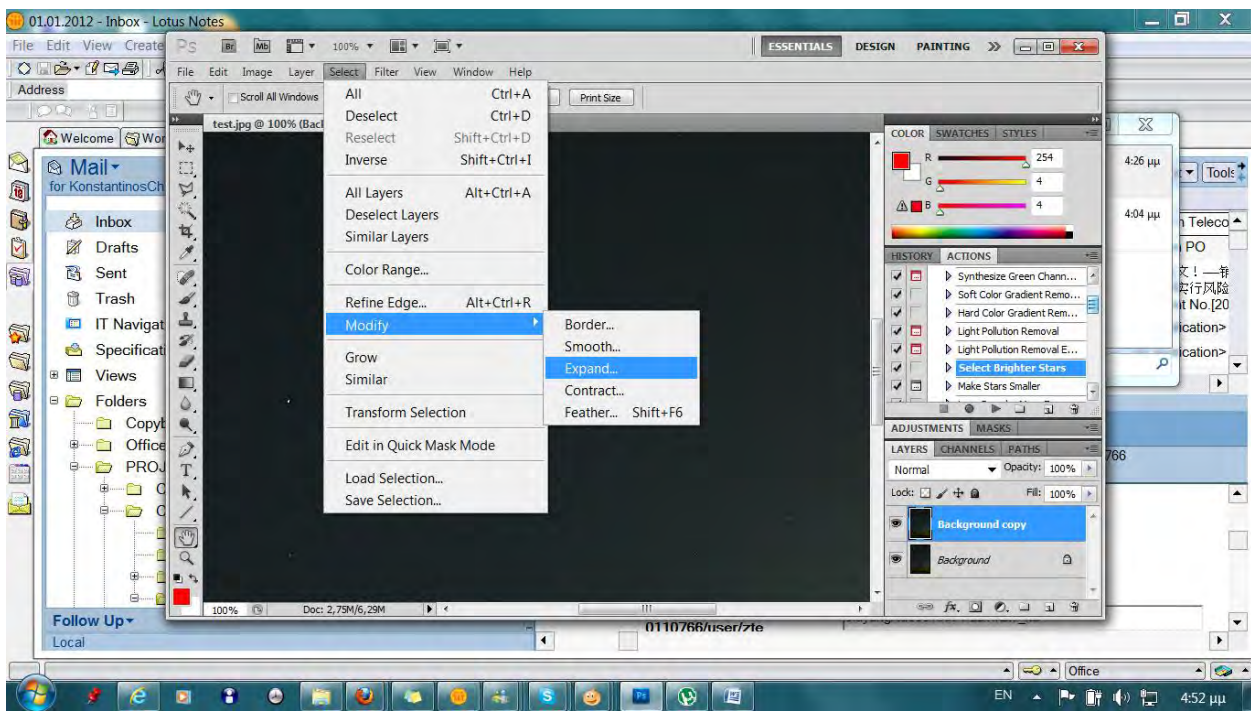


Akira Fujii Effect in constellation imaging

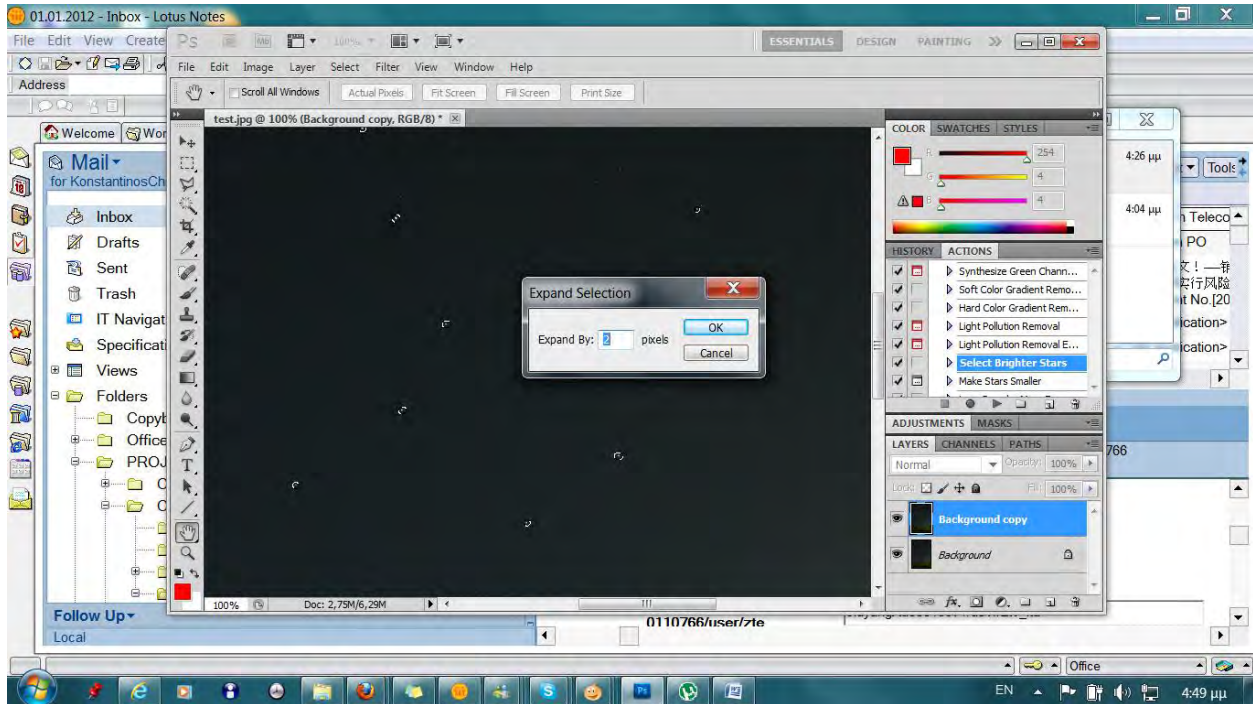
Step3: Select brighter stars using the Astronomy Tools action



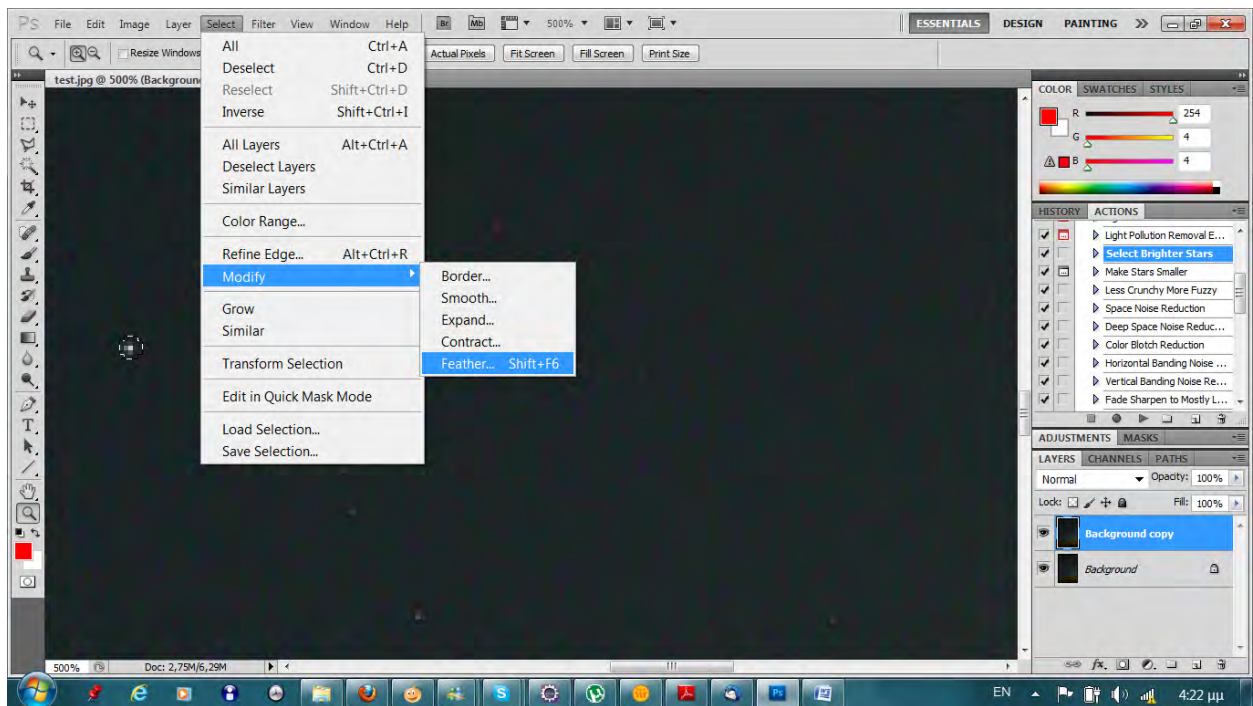
Step4: Expand selection by two pixels



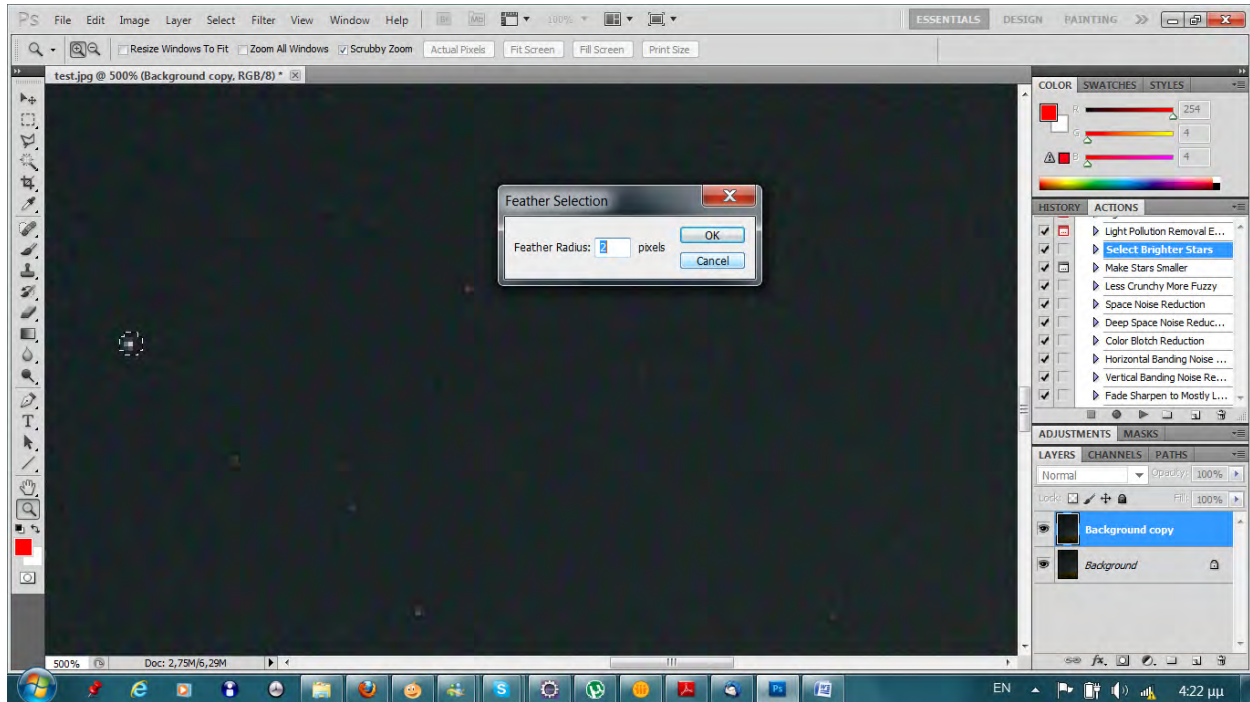
Akira Fujii Effect in constellation imaging



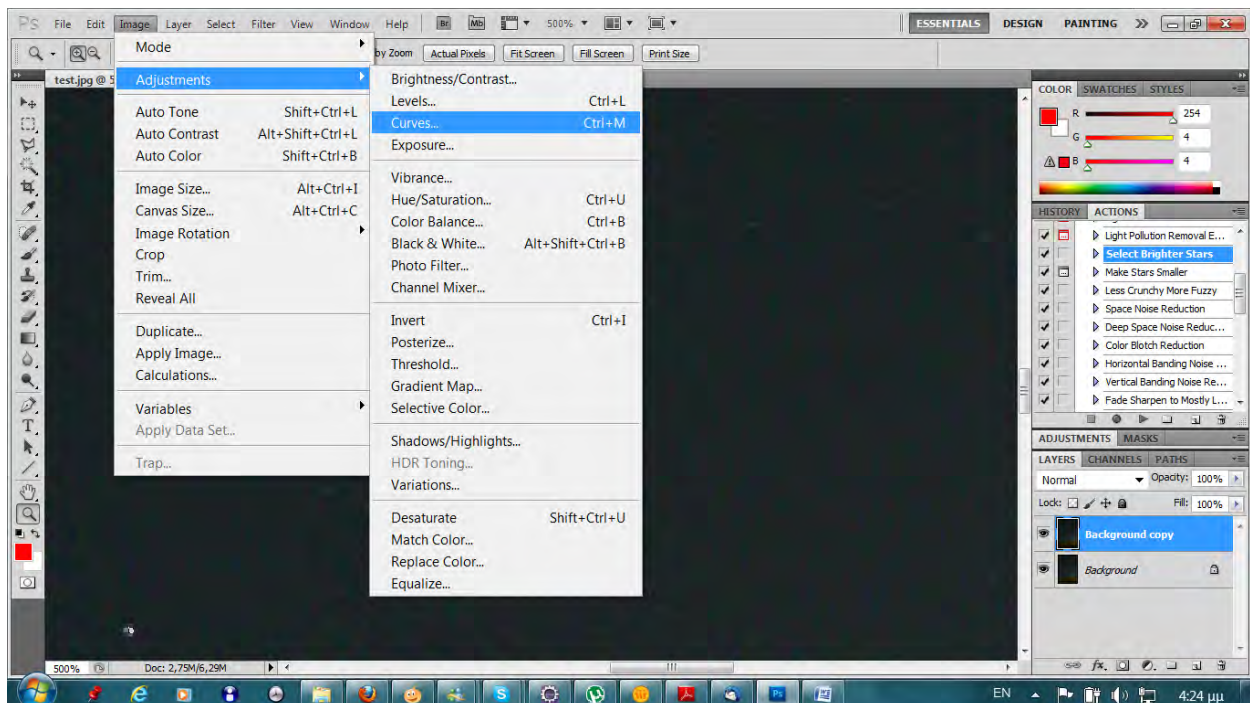
Step5: Now use the feather tool to soften star edges



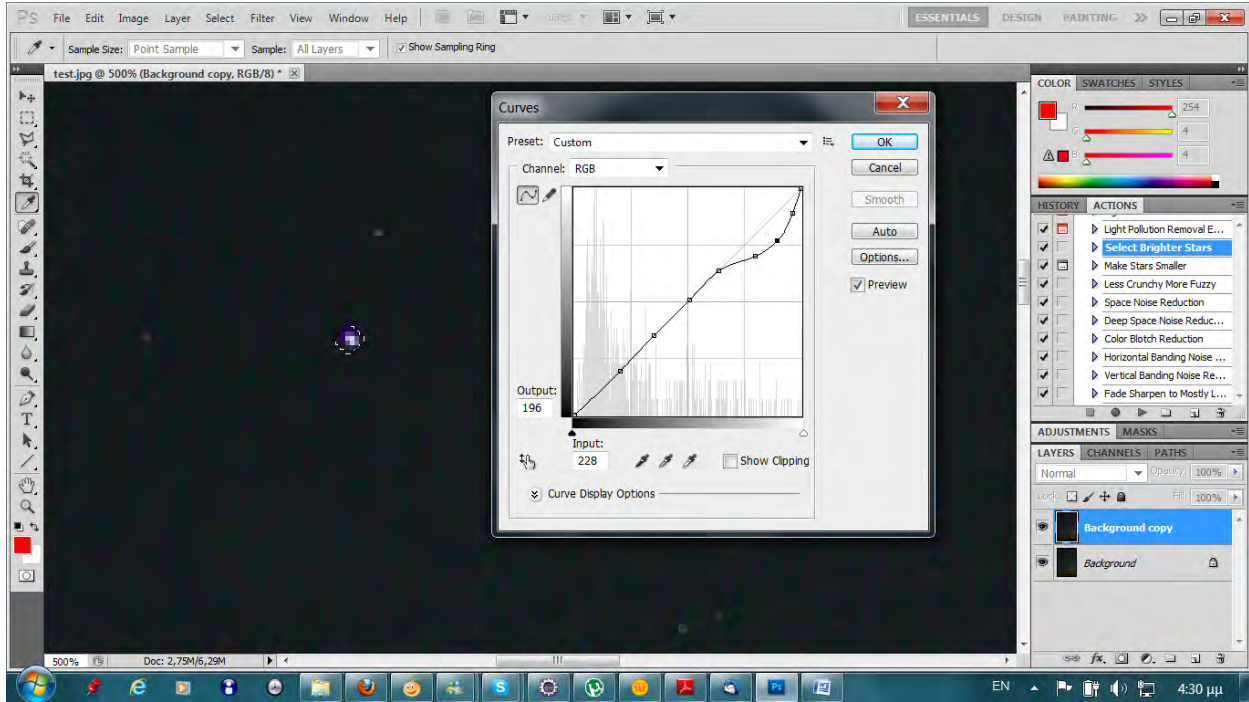
Akira Fujii Effect in constellation imaging



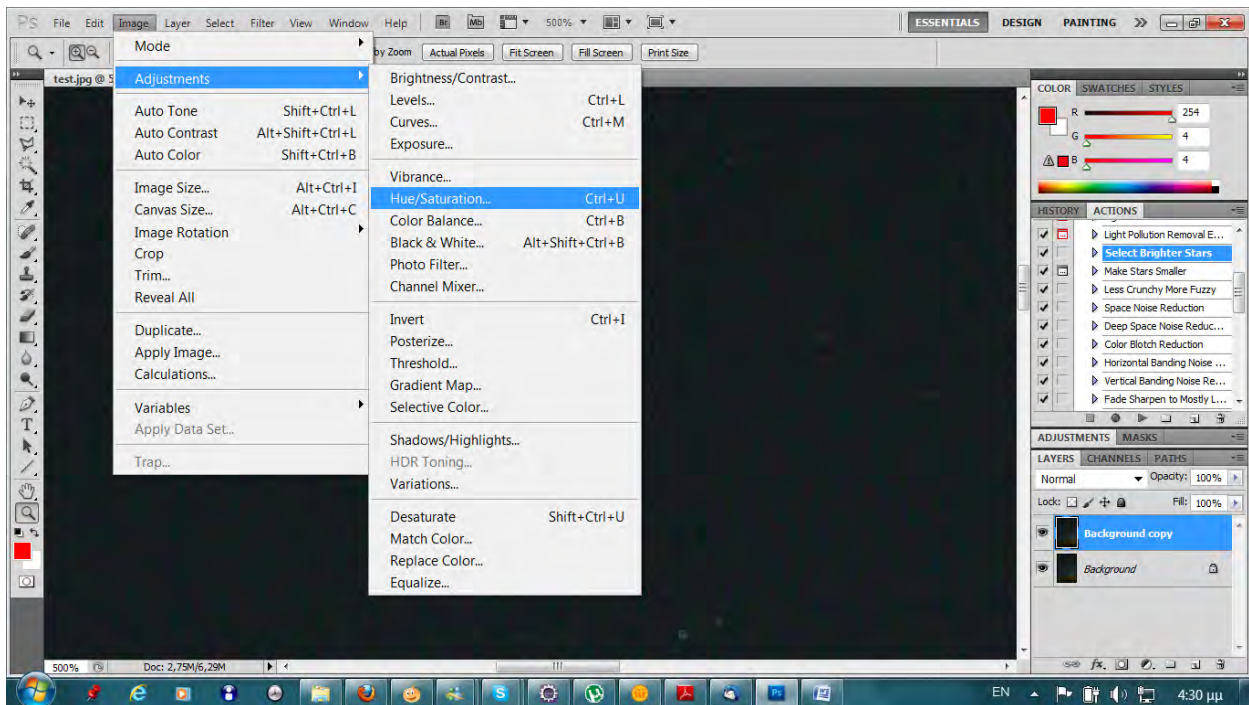
Step6: Use curves



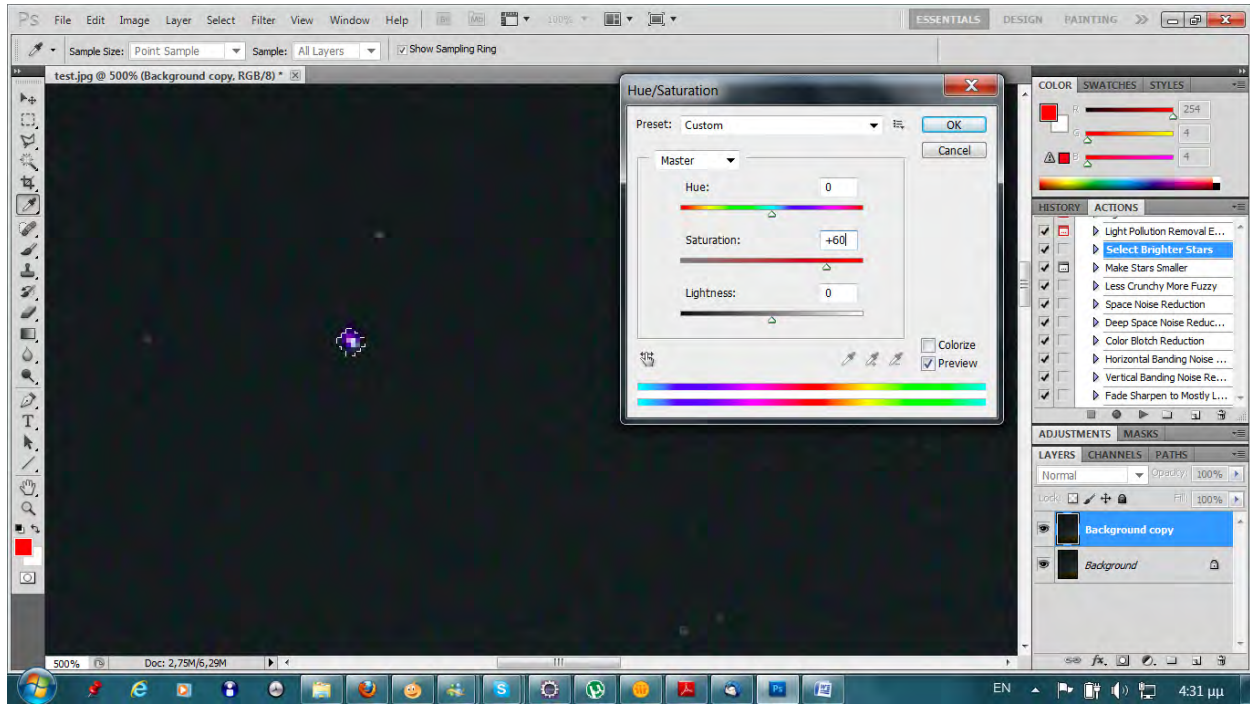
Akira Fujii Effect in constellation imaging



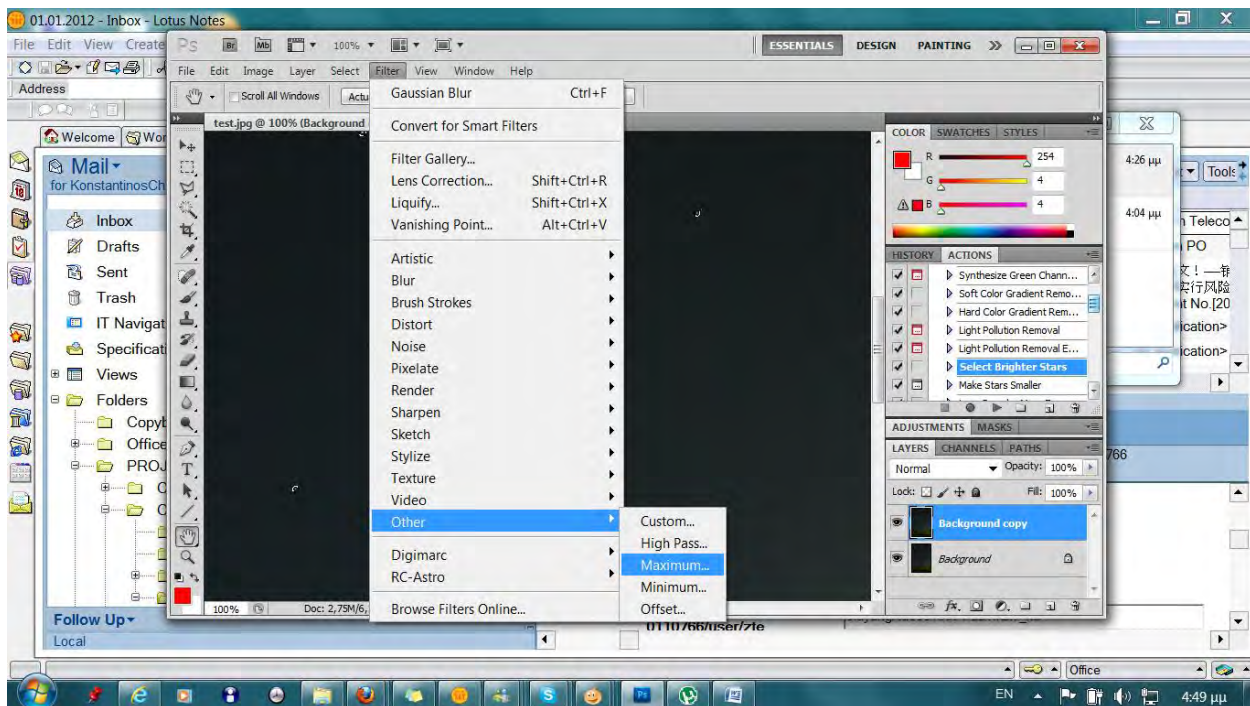
Step7: Increase saturation



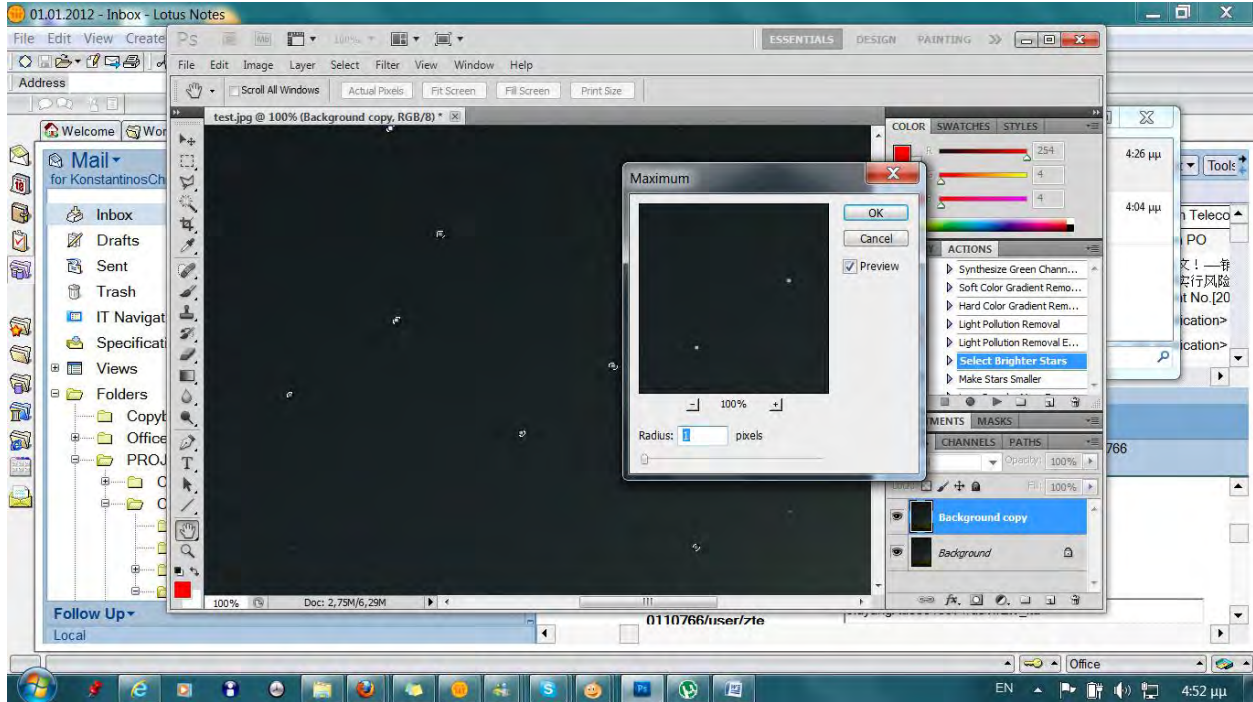
Akira Fujii Effect in constellation imaging



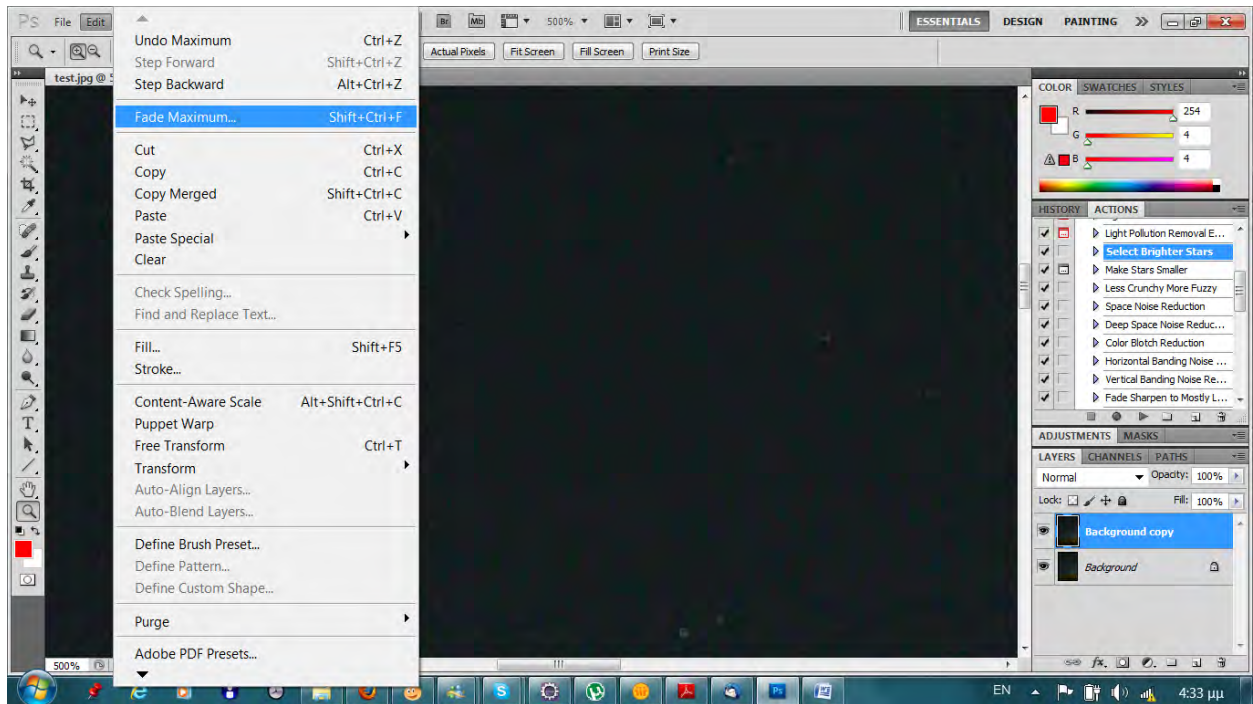
Step8: Set maximum filter to one pixels



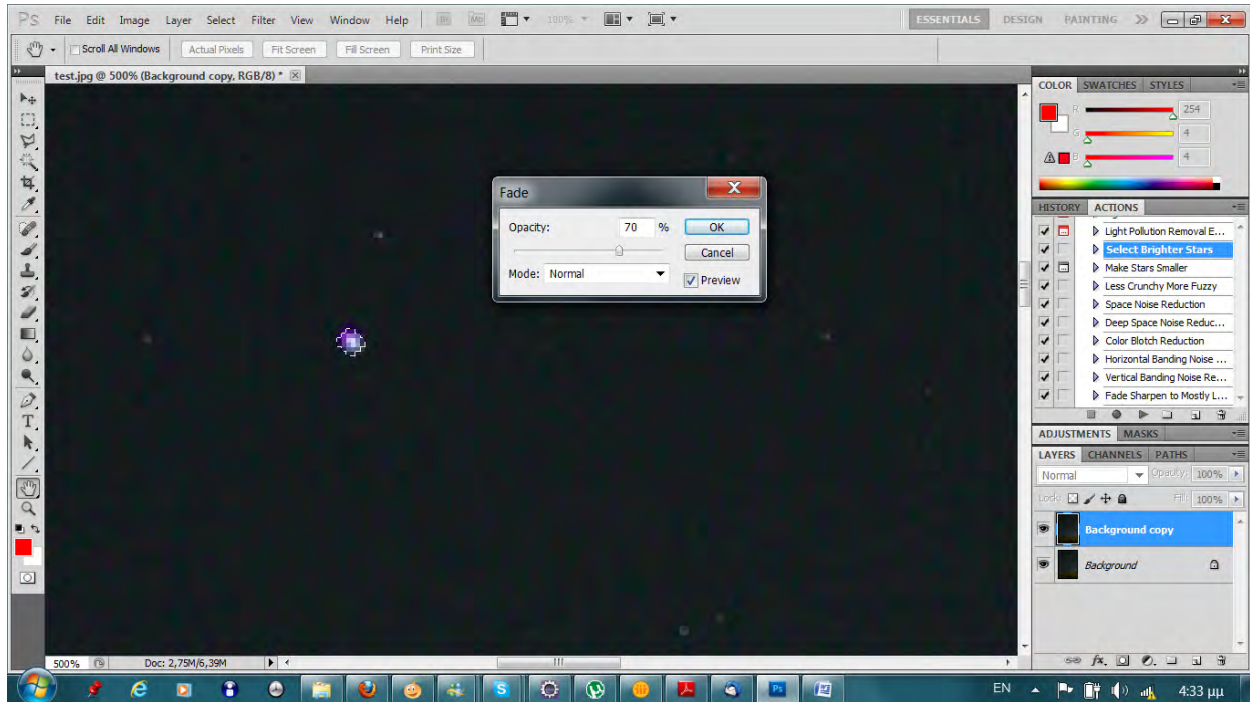
Akira Fujii Effect in constellation imaging



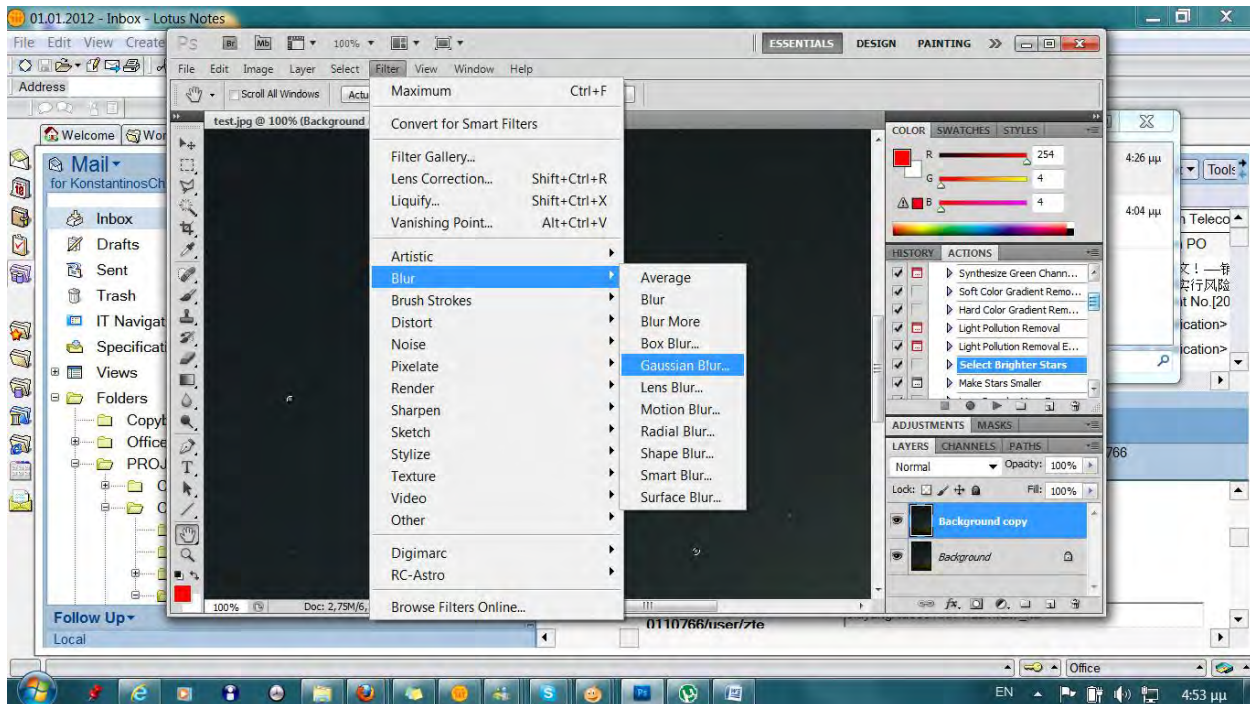
Step9: Fade maximum



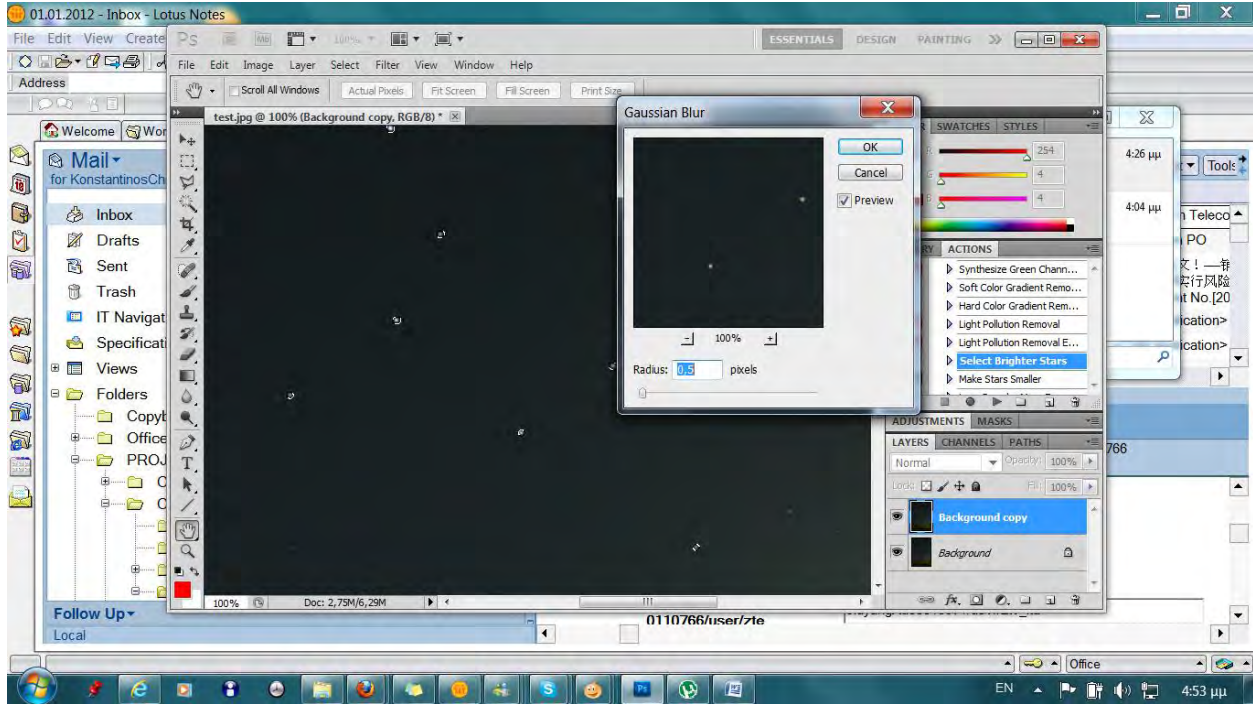
Akira Fujii Effect in constellation imaging



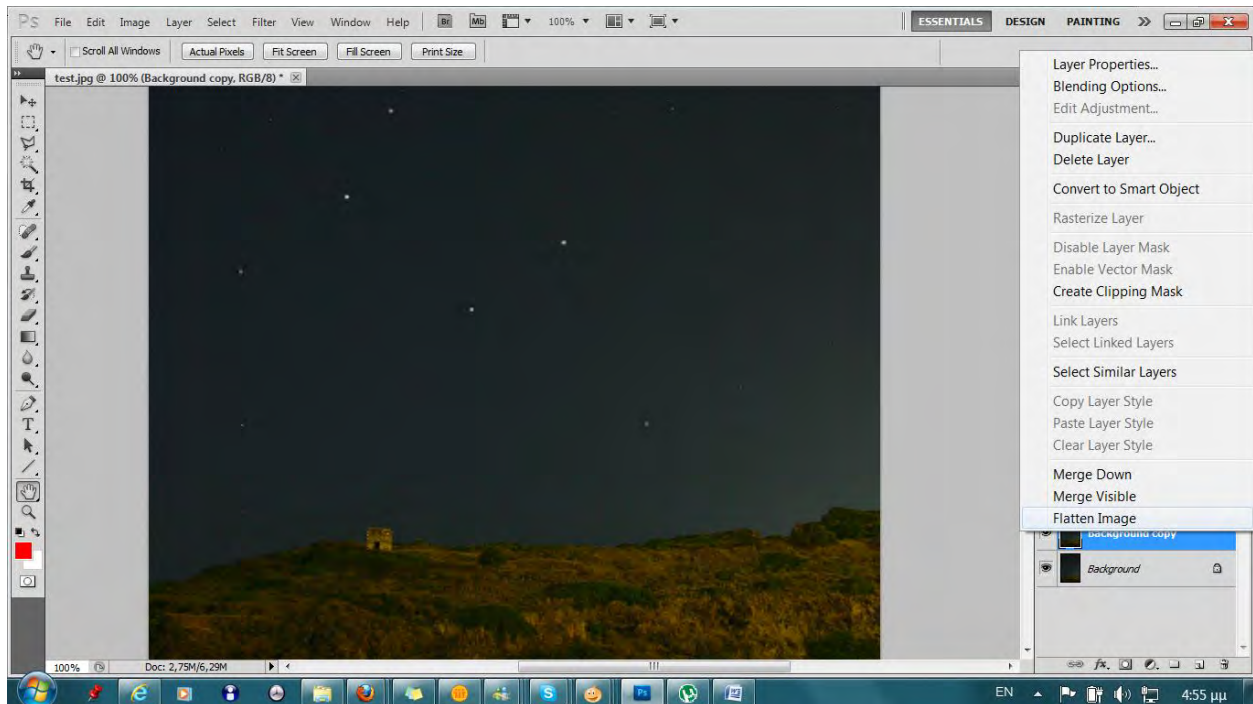
Step10: Perform Gaussian blur



Akira Fujii Effect in constellation imaging



Step11: Flatten image



Akira Fujii Effect in constellation imaging

Result comparison

Before



Akira Fujii Effect in constellation imaging

After

