



Planetary Research Team

Crab Nebula Association

COELUM Astronomia

Rodolfo Calanca, Angelo Angeletti

## INFO: EXOPLANET LIVE! PROJECT

**27 February 2008: AN INVITATION TO WATCH THE TRANSIT OF EXTRASOLAR PLANET XO-2b FROM EUROPEAN ASTRONOMICAL OBSERVATORIES**

A WIDE-RANGE INITIATIVE PROMOTED BY:  
PLANETARY RESEARCH TEAM – COELUM ASTRONOMIA - Italy

Rodolfo Calanca, (director of the project): [planetary.team@gmail.com](mailto:planetary.team@gmail.com)  
Angelo Angeletti (co-director, software manager): [angelo.angeletti@virgilio.it](mailto:angelo.angeletti@virgilio.it)

### XO-2b TRANSITS - January – March 2008

Exoplanet	start transit			end of transit			Operation
	Date	UT	h	Date	UT	h	
XO-2b	24 Jan. 2008	20:47	69°	24 Jan. 2008	23:33	79°	TEST
XO-2b	06 feb. 2008	22:41	79°	07 feb. 2008	01:27	53°	TEST
XO-2b	14 feb. 2008	19:01	65°	14 feb. 2008	21:47	81°	TEST
XO-2b	27 feb. 2008	20:55	81°	27 feb. 2008	23:41	65°	<b>PUBLIC OBSERVATION</b>
XO-2b	11 mar. 2008	22:49	57°	12 mar. 2008	01:35	32°	<b>ALTERNATIVE PUBLIC OBSERVATION</b>

## EXOPLANET LIVE! PROJECT

AN OBSERVATIONAL EVENT ACROSS EUROPE - PROMOTED BY THE PLANETARY RESEARCH TEAM AND COELUM ASTRONOMIA MAGAZINE

### COELUM Astronomia

Astronomy and Science monthly magazine - Edizioni Scientifiche Coelum

Via Appia 18 30173 Venezia-Mestre Italy

Phone: +39 41 5321476 - Fax: +39 41 5327427

mail: [segreteria@coelum.com](mailto:segreteria@coelum.com)

[www.coelum.com](http://www.coelum.com)

# Star : XO-2

---

## THE STAR

---

### - Basic data :

<b>Name</b>	XO-2
<b>Distance</b>	149 ( $\pm$ 4) <i>pc</i> <a href="#">ref.</a>
<b>Spectral Type</b>	K0V
<b>Apparent Magnitude V</b>	11.18
<b>Mass</b>	0.98 ( $\pm$ 0.02) $M_{sun}$ <a href="#">ref.</a>
<b>Age</b>	2 <i>Gyr</i> <a href="#">ref.</a>
<b>Effective Temperature</b>	5340 ( $\pm$ 32) <i>K</i> <a href="#">ref.</a>
<b>Radius</b>	0.964 ( $\pm$ 0.02) $R_{sun}$ <a href="#">ref.</a>
<b>Metallicity [Fe/H]</b>	0.45 ( $\pm$ 0.02) <a href="#">ref.</a>
<b>Right Asc. Coord.</b>	07 48 07
<b>Decl. Coord.</b>	+50 13 33

---

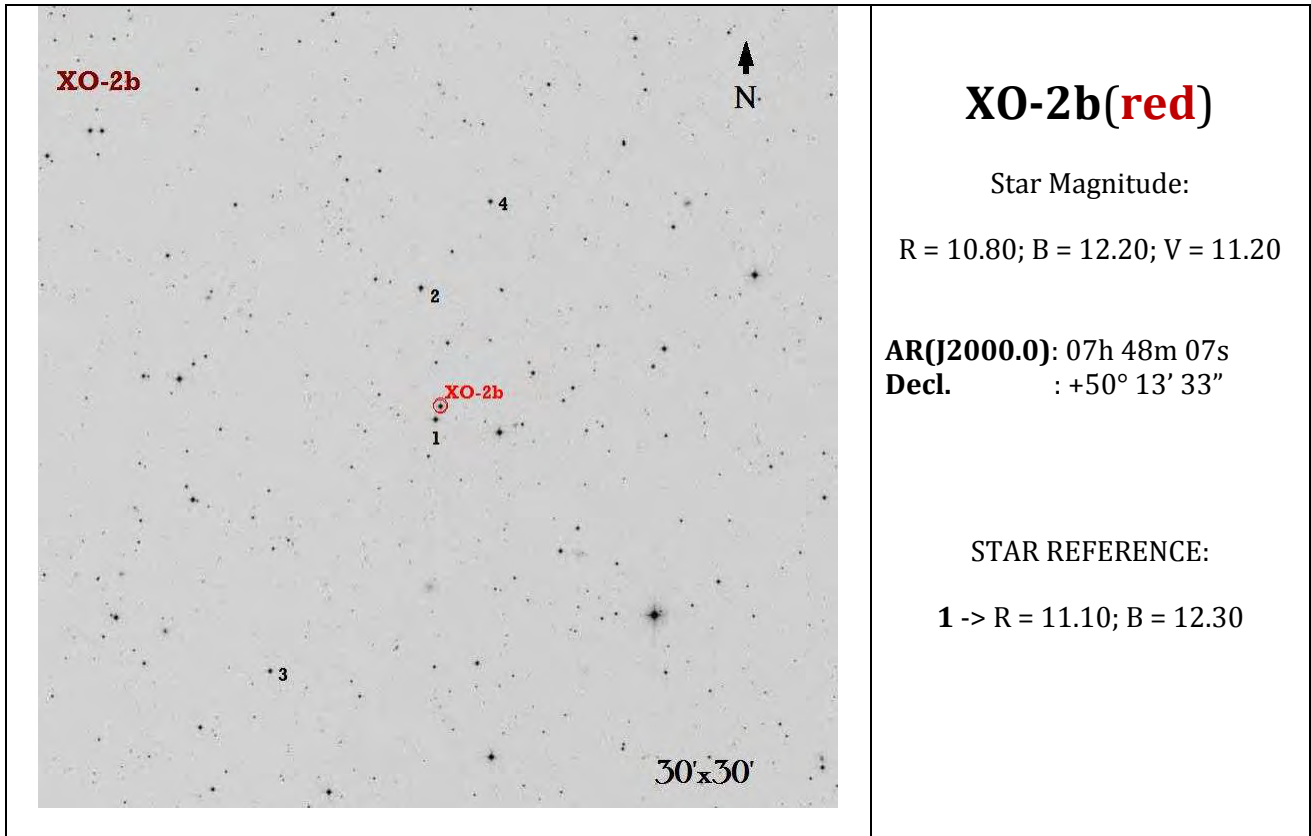
## PLANET

---

### - Basic data :

<b>Name</b>	XO-2 b
<b>Discovered in</b>	2007
<b>Mass</b>	0.57 ( $\pm$ 0.06) $M_J$ <a href="#">ref.</a>
<b>Semi major axis</b>	0.0369 ( $\pm$ 0.002) <i>AU</i> <a href="#">ref.</a>
<b>Orbital period</b>	2.615838 ( $\pm$ 8e-06) <i>days</i> <a href="#">ref.</a>
<b>Radius</b>	0.973 ( $\pm$ 0.03) $R_J$ <a href="#">ref.</a>
<b>T<sub>transit</sub></b>	2454147.74902 ( $\pm$ 0.0002) <a href="#">ref.</a>
<b>Inclination</b>	> 88.58 <i>deg.</i> <a href="#">ref.</a>
<b>Update</b>	02/05/07

# XO-2b STAR CHART



## XO-2b(red)

Star Magnitude:

R = 10.80; B = 12.20; V = 11.20

AR(J2000.0): 07h 48m 07s  
Decl. : +50° 13' 33"

STAR REFERENCE:

1 -> R = 11.10; B = 12.30