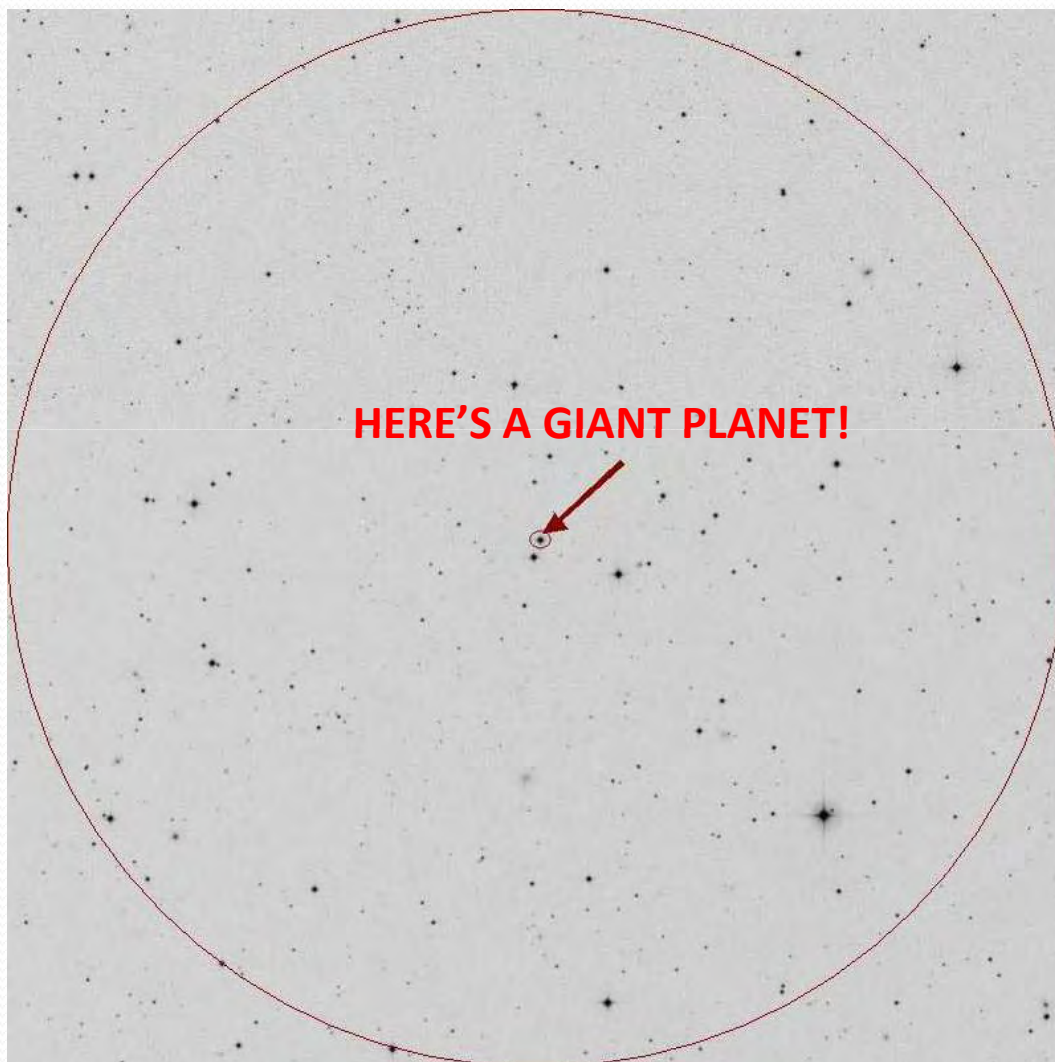


Exoplanet Live!

5



The picture at left shows a restricted field around the star hosting XO-2b (see arrow).

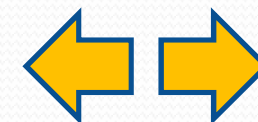
The greater circle is half a grade across.

It matches the size of the full Moon as seen in the sky.

XO-2:

R.A. (J2000.0): 07h 48m 07s

Decl. (J2000.0): +50° 13' 33"

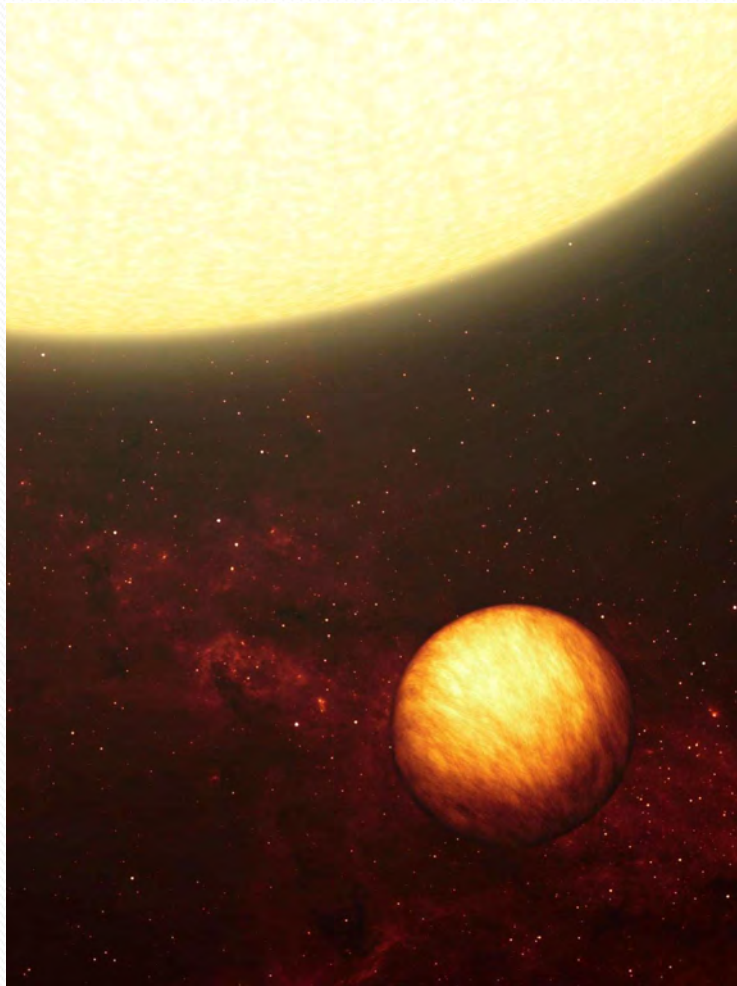




Exoplanet Live!

6

XO-2b



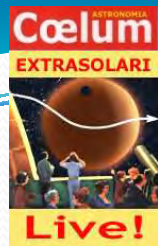
Planet XO-2b was discovered in 2007 by a reasearch team (Italians F. Mallia and G. Masi among them).

The image at left is an artist's impression of XO-2b.

Actually, the real star has a brighter orange hue; the planet's also might be different.

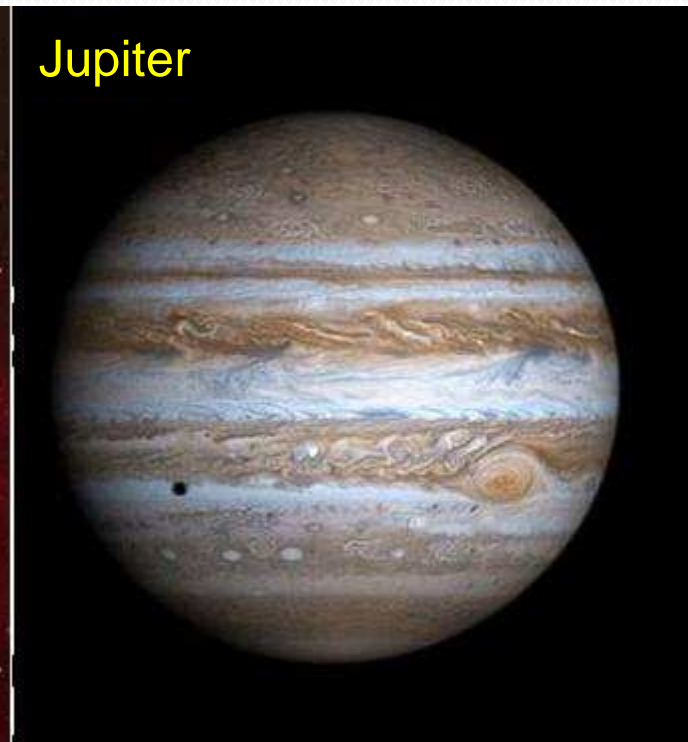
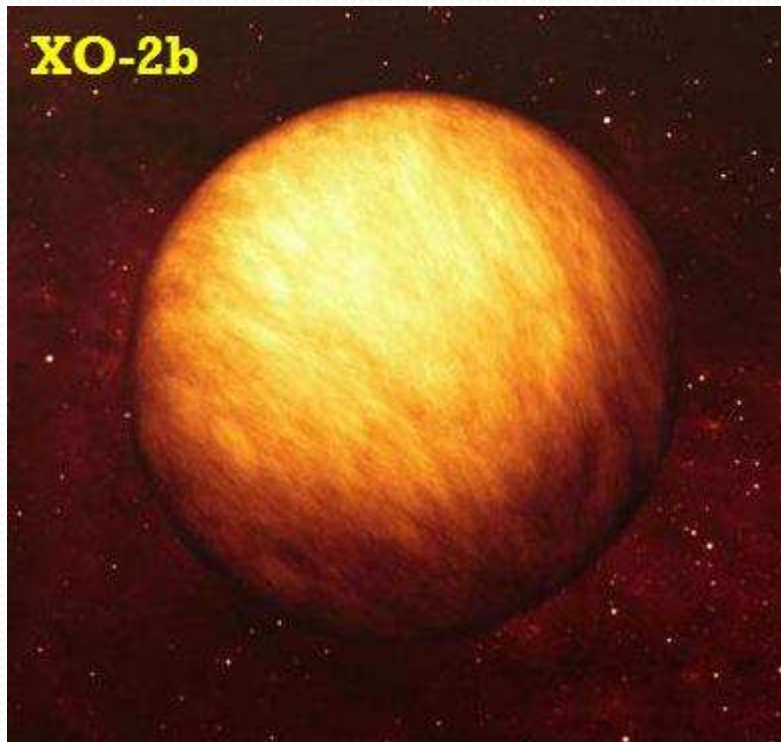
The available data allow us to infer that the size of XO-2b is barely less than Jupiter's.



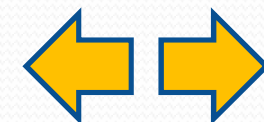


Exoplanet Live!

7



An ideal comparison between Jupiter and planet XO-2b





Exoplanet Live!

8

XO-2b – THE PHYSICAL DATA

THE PARENT STAR:

- is bright orange
- is the same size as our Sun's
- is almost 500 light years away.

THE PLANET:

- is the same size as Jupiter's
- revolves 5.5 million Km away from its star
- completes an orbit in 2 days plus 15 hours.

